

200 nm



Mag = 12.00 K X

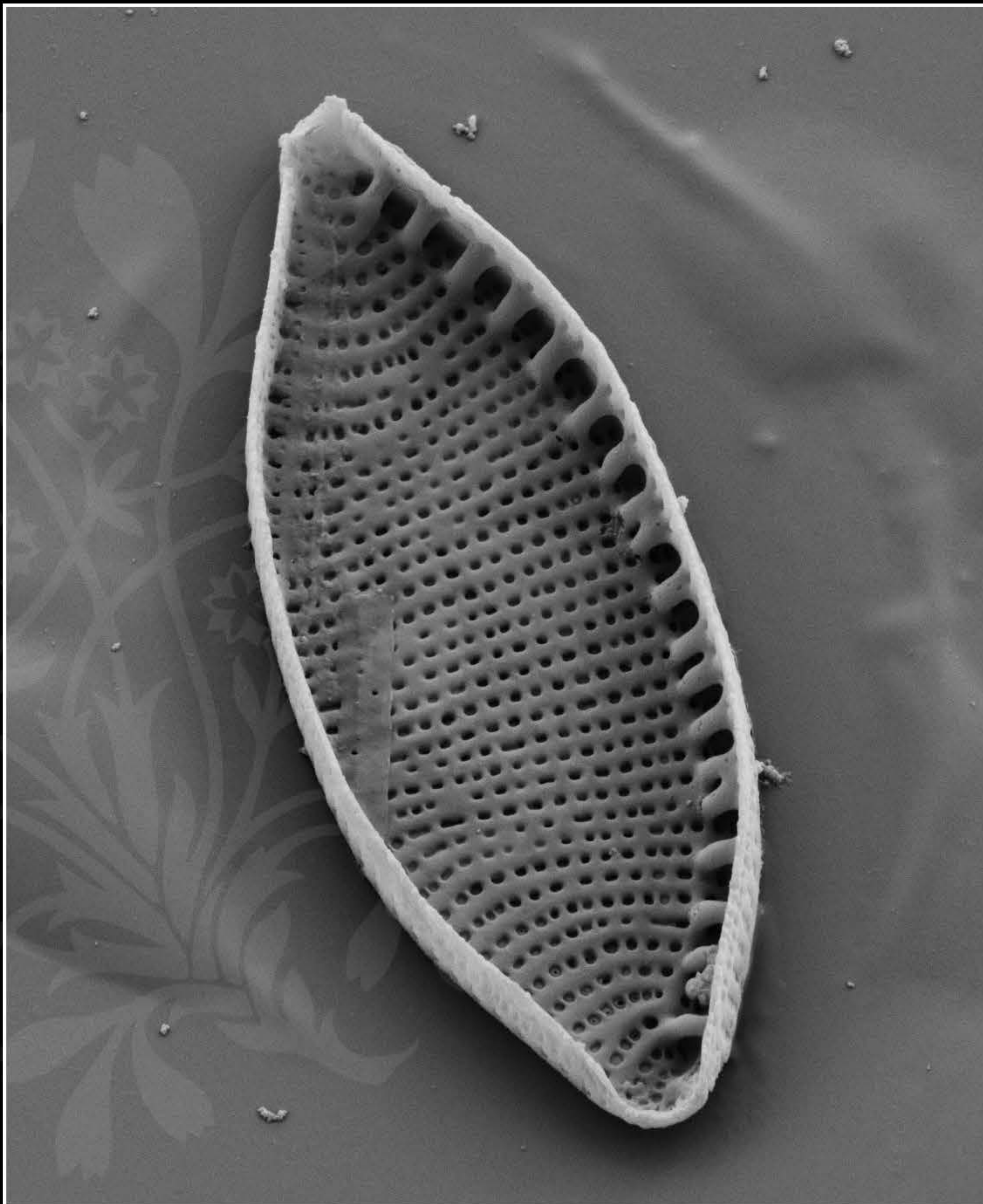
EHT = 5.00 kV

Signal A = SE2 Date : 3 Mar 2020

WD = 5.0 mm

File Name = JapanA1_01.tif





1 μ m
|-----|

Mag = 6.00 K X

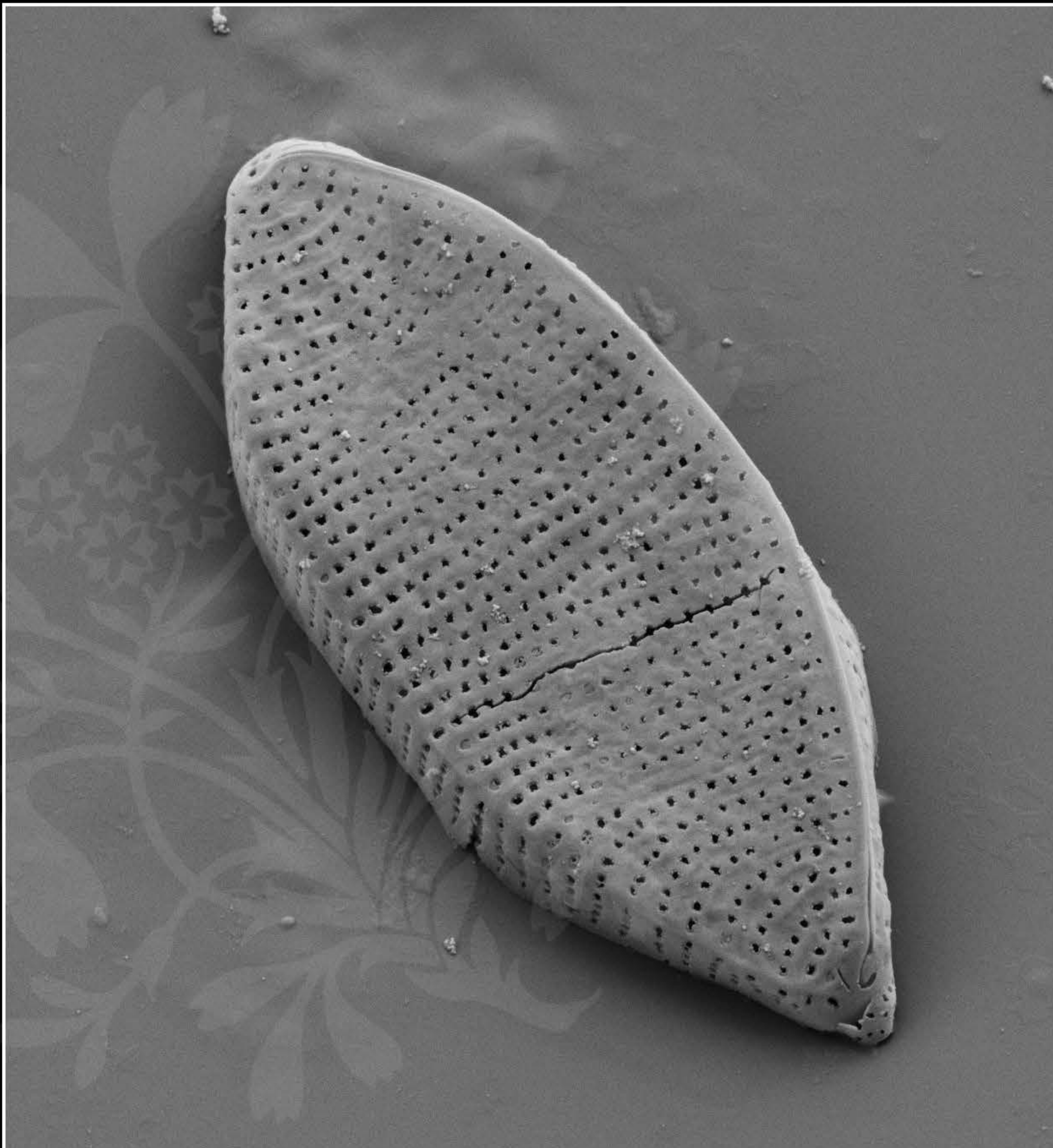
EHT = 5.00 kV

Signal A = SE2 Date : 3 Mar 2020

WD = 5.0 mm

File Name = JapanA1_02.tif





1 μ m
|-----|

Mag = 6.00 K X

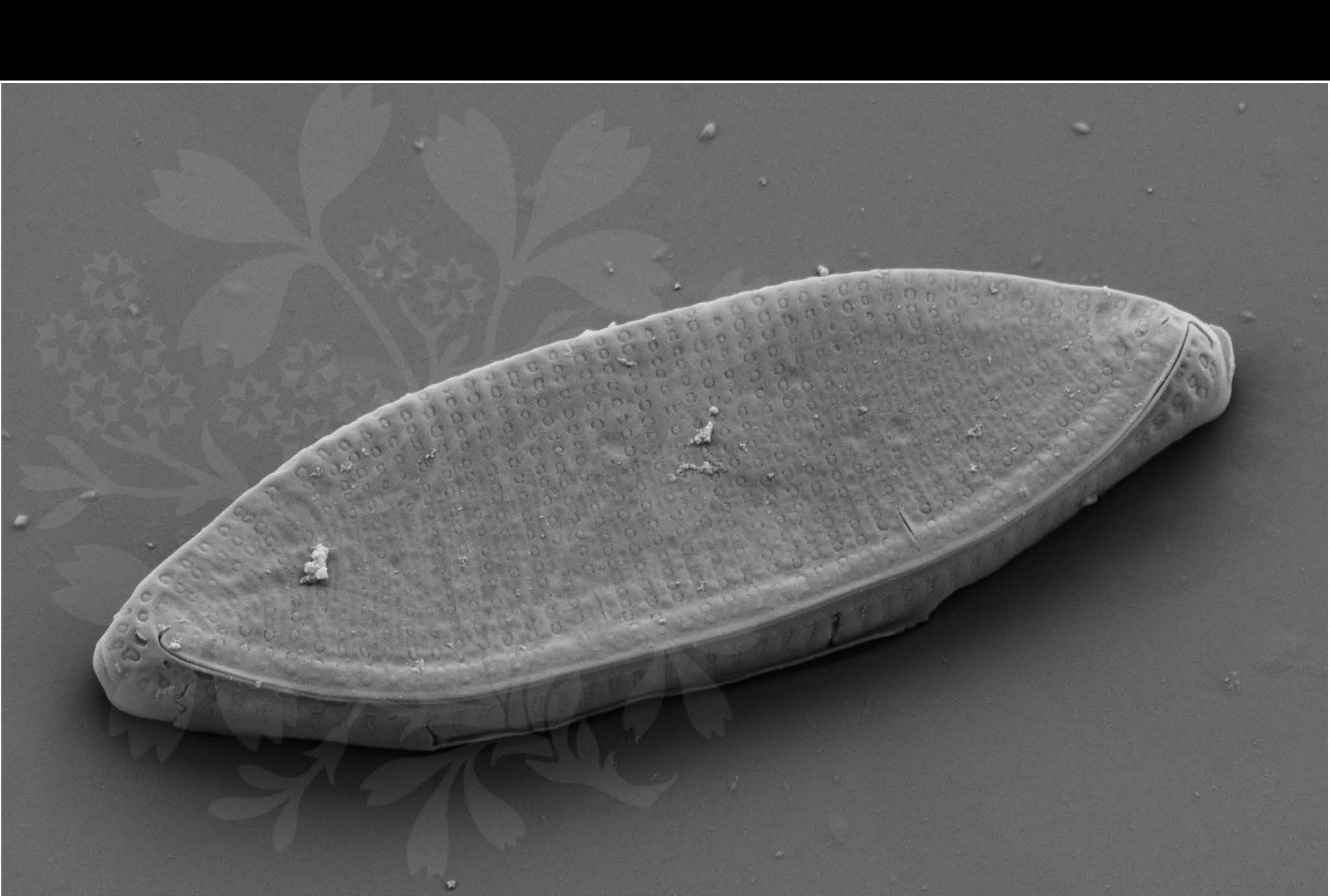
EHT = 5.00 kV

Signal A = SE2 Date : 3 Mar 2020

WD = 5.0 mm

File Name = JapanA1_03.tif





1 μ m
|-----|

Mag = 7.00 K X

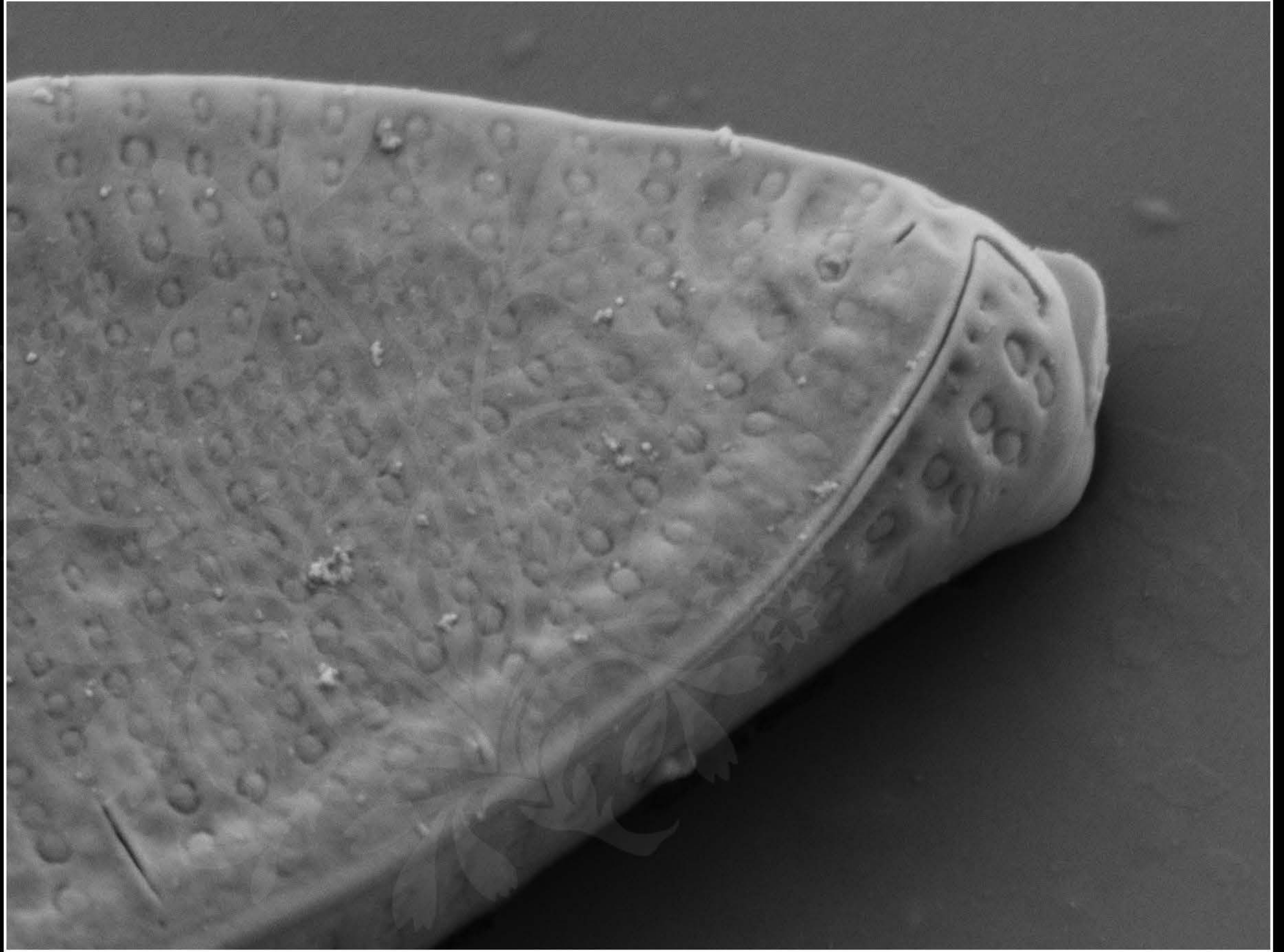
EHT = 5.00 kV

Signal A = SE2 Date : 3 Mar 2020

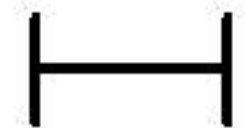
WD = 5.0 mm

File Name = JapanA1_04.tif





200 nm



Mag = 20.00 K X

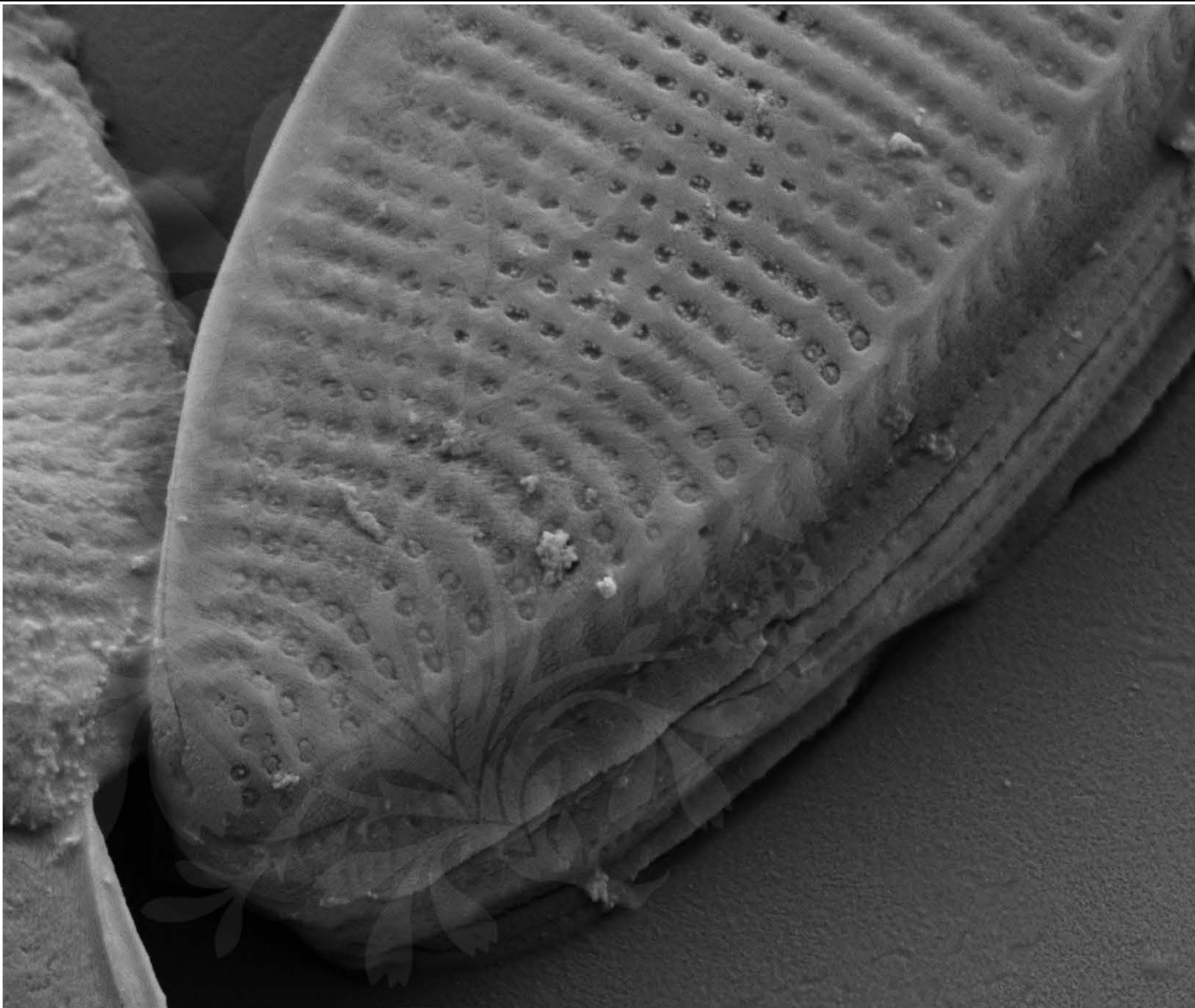
EHT = 5.00 kV

Signal A = SE2 Date : 3 Mar 2020

WD = 5.0 mm

File Name = JapanA1_05.tif





200 nm

H

Mag = 12.00 K X

EHT = 5.00 kV

Signal A = SE2 Date : 3 Mar 2020

WD = 5.0 mm

File Name = JapanA1_06.tif

