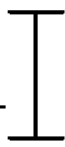


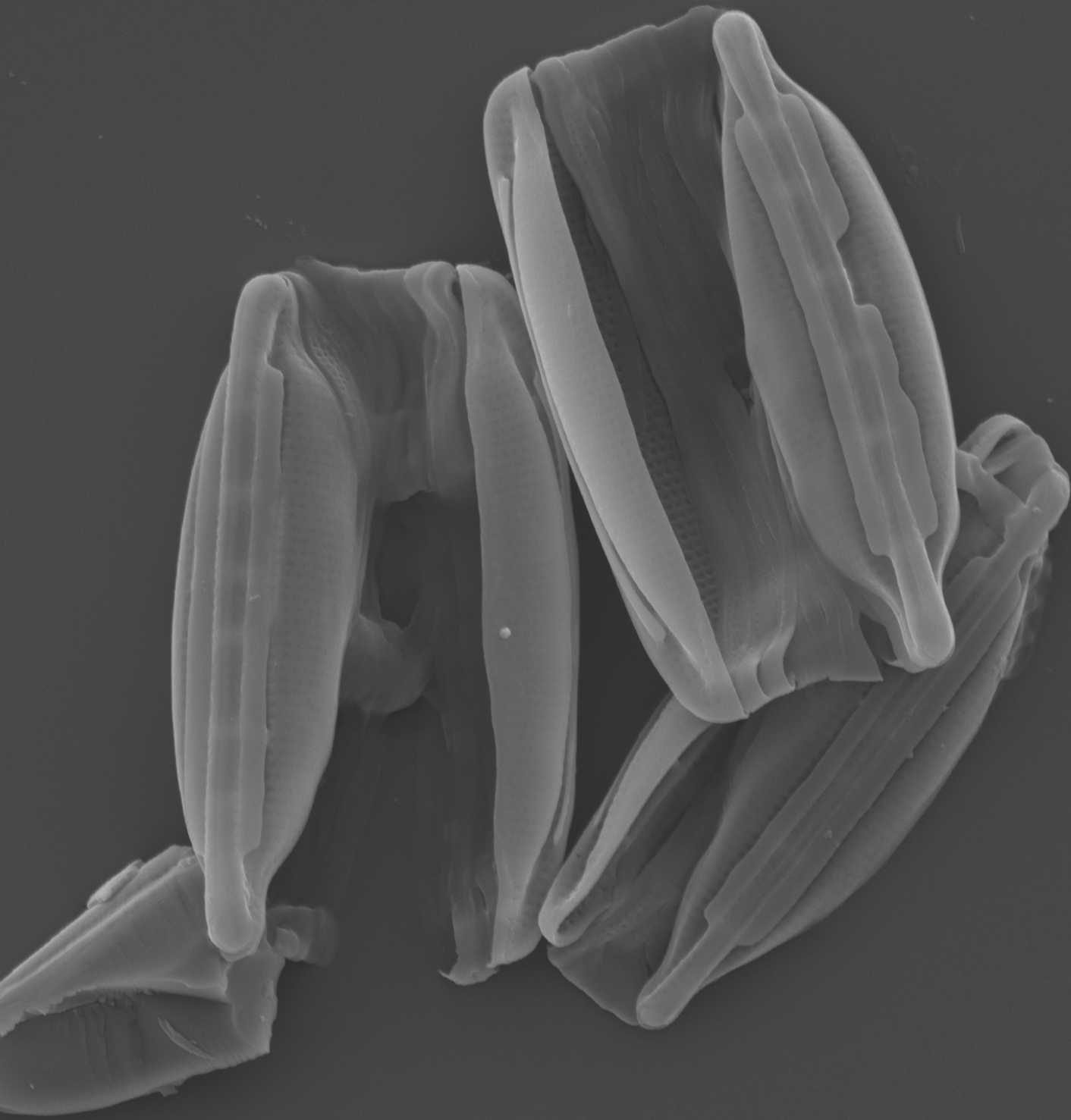
1 μ m



EHT = 7.00 kV
WD = 27.1 mm

Signal A = SE2
Mag = 16.09 KX

Date : 18 Jun 2013

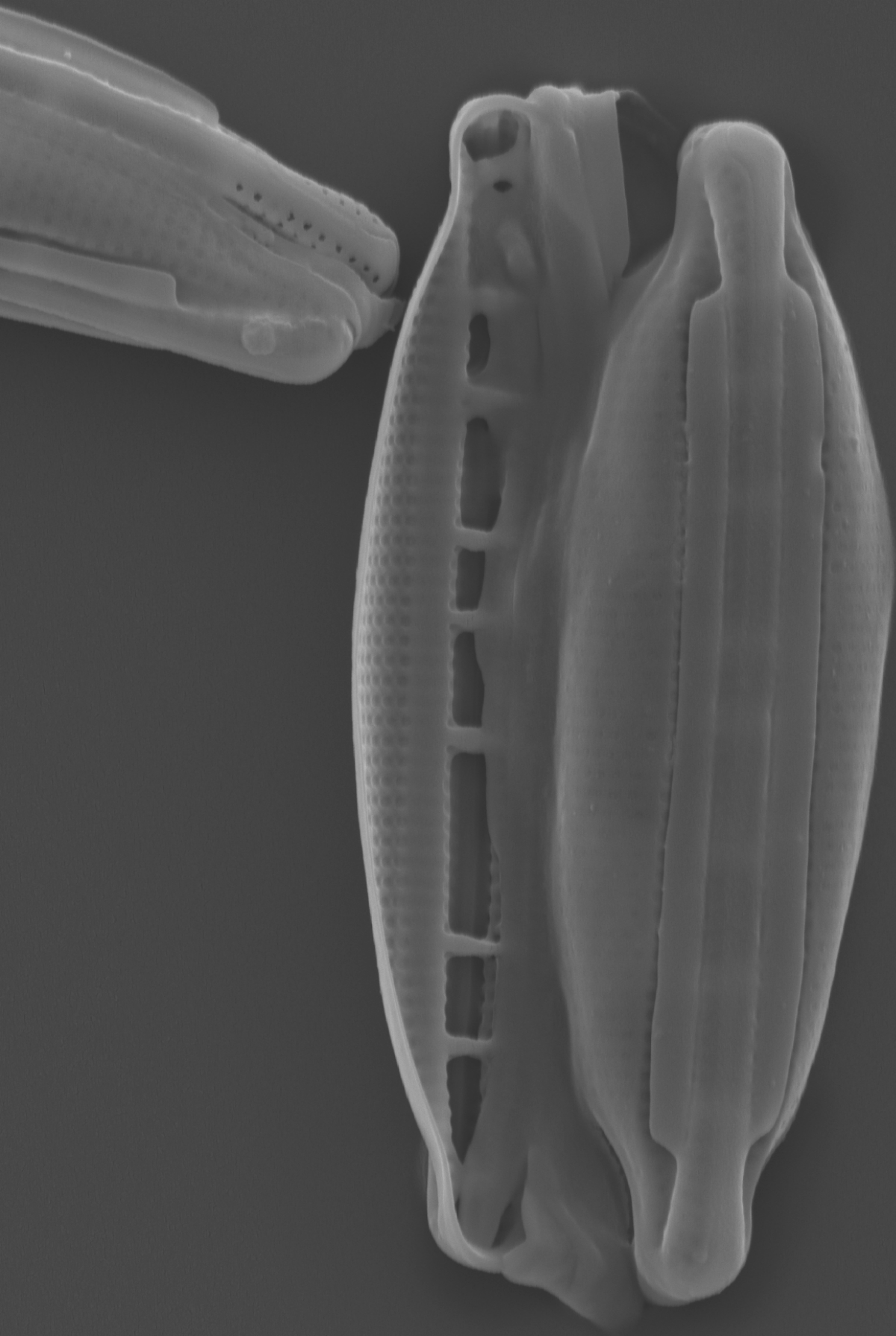


1 μm

EHT = 7.00 kV
WD = 27.1 mm

Signal A = SE2
Mag = 10.73 KX

Date : 18 Jun 2013



2 μ m



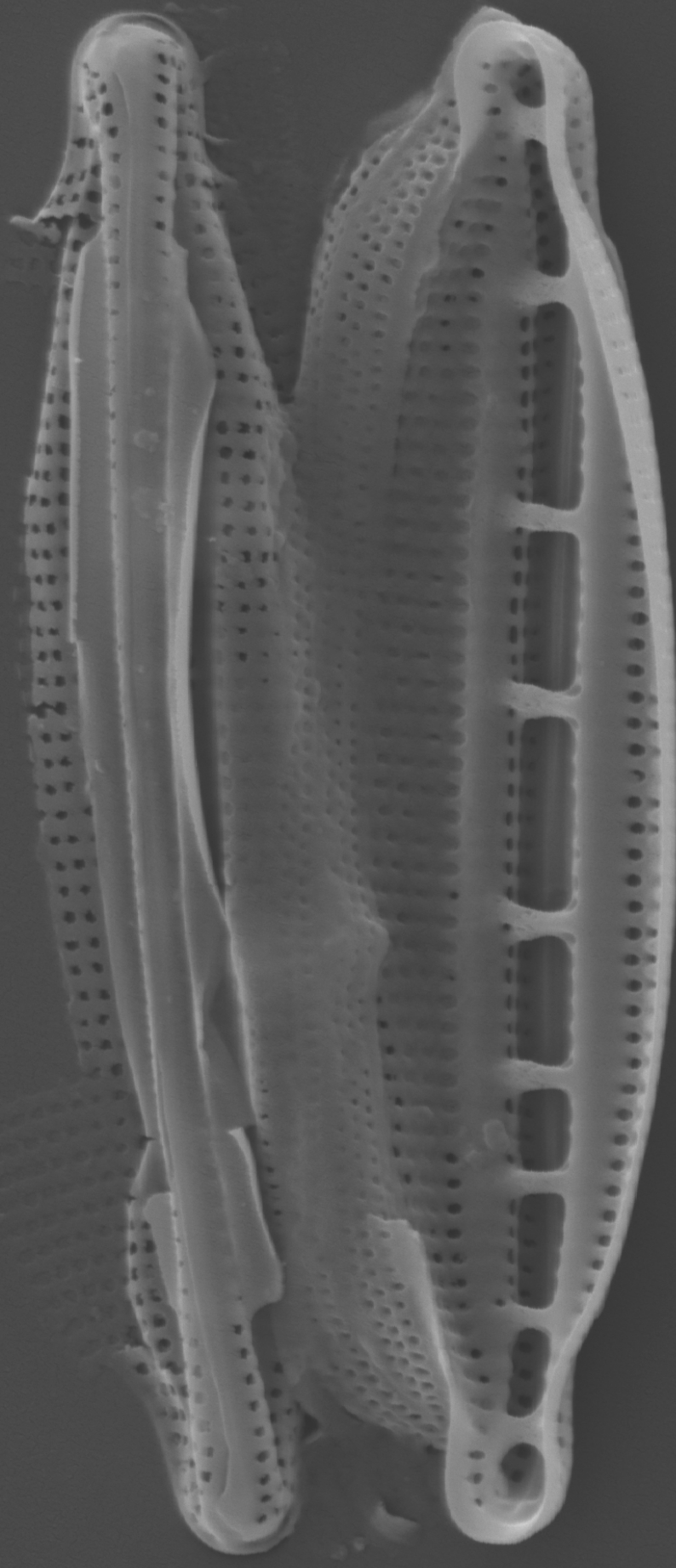
EHT = 7.00 kV

WD = 27.1 mm

Signal A = SE2

Mag = 18.04 KX

Date : 18 Jun 2013



2 μ m

EHT = 7.00 kV

WD = 27.1 mm

Signal A = SE2

Mag = 20.65 K X

Date : 18 Jun 2013