

200 nm



Mag = 20.00 K X

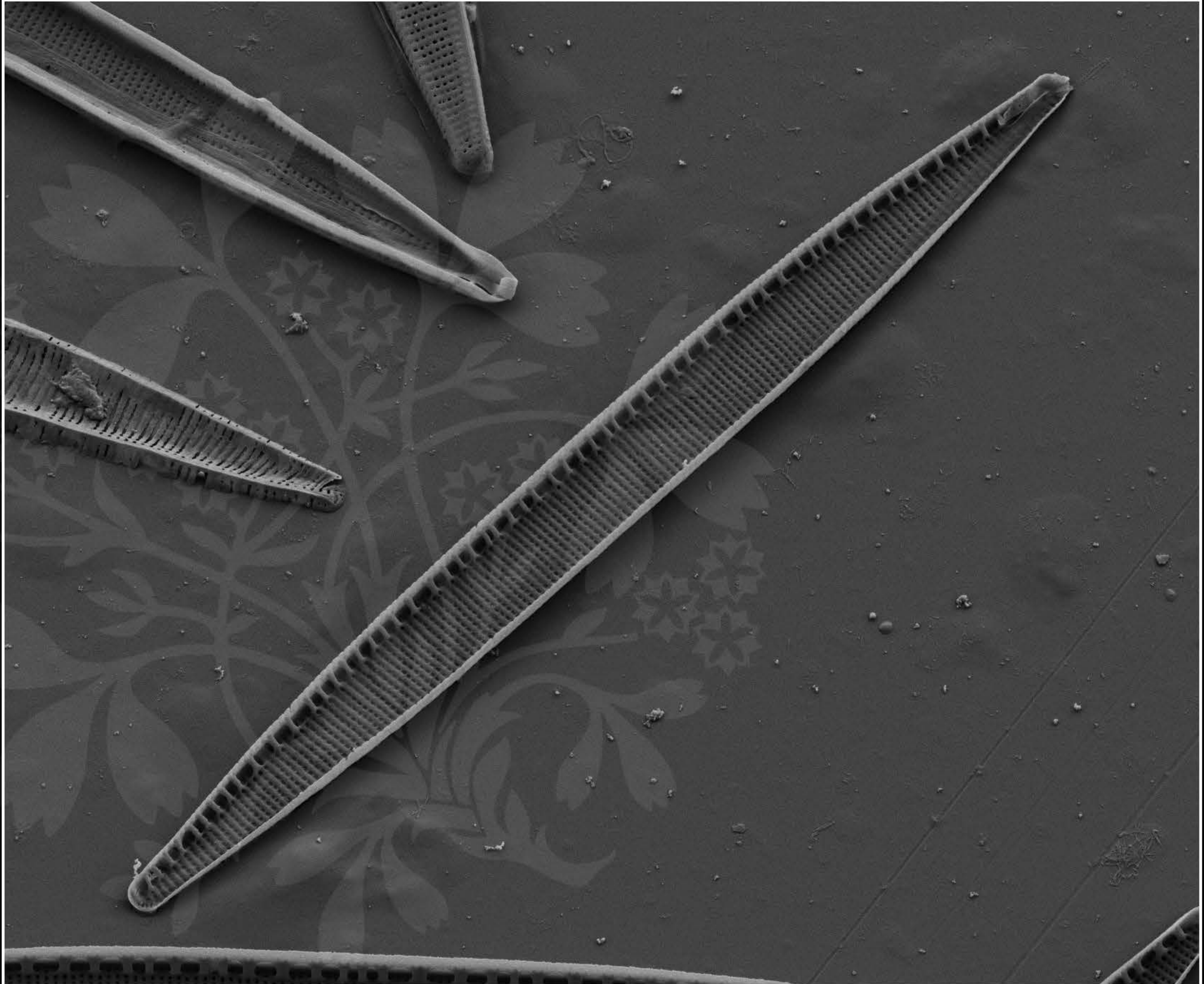
EHT = 5.00 kV

Signal A = SE2 Date : 19 Feb 2020

WD = 4.5 mm

File Name = SriLankaB_01.tif





1 μ m
H

Mag = 2.50 K X

EHT = 5.00 kV

Signal A = SE2 Date : 19 Feb 2020

WD = 4.5 mm

File Name = SriLankaB_02.tif





1 μm
H

Mag = 2.50 K X

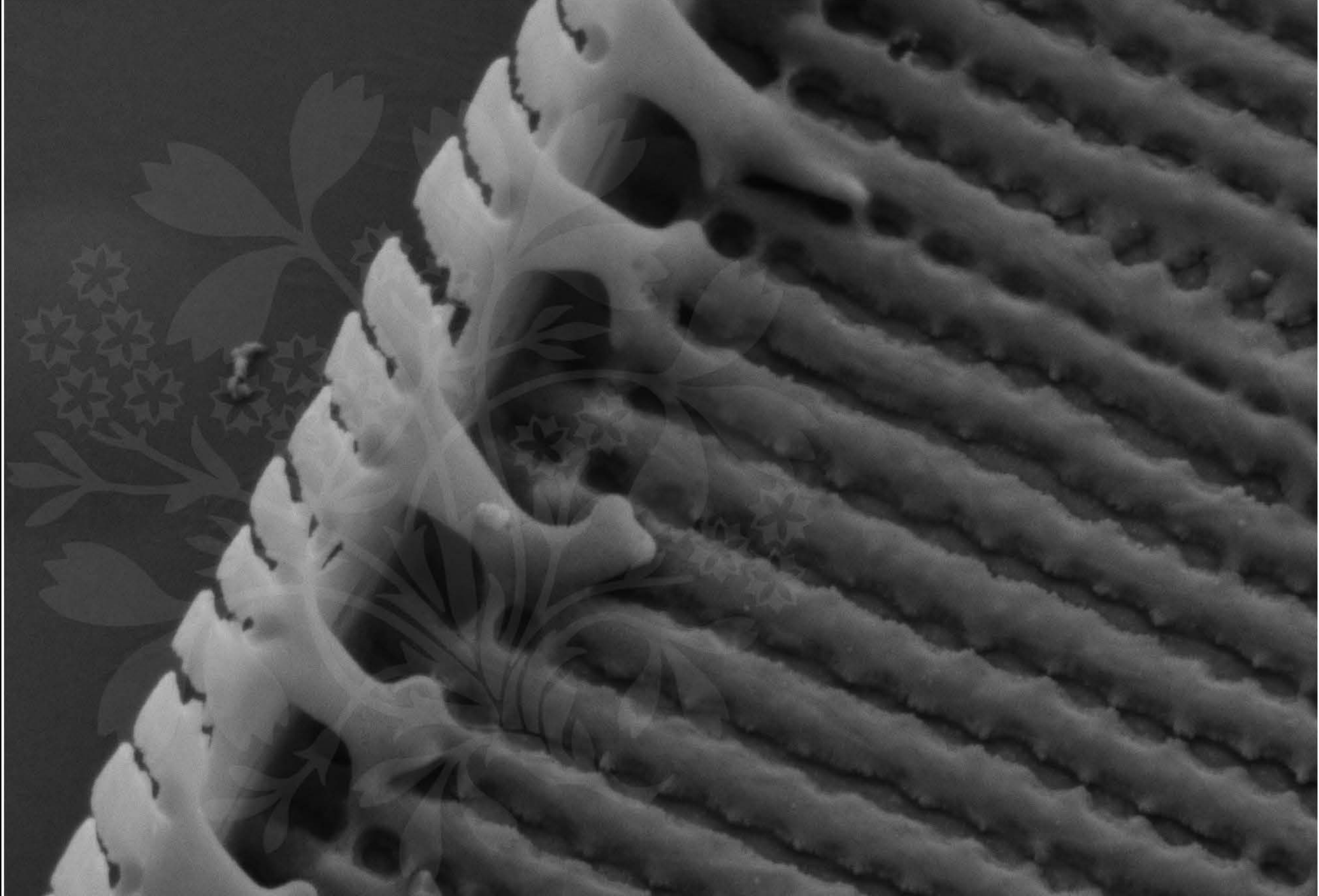
EHT = 5.00 kV

Signal A = SE2 Date : 19 Feb 2020

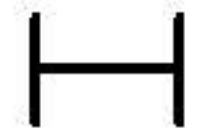
WD = 4.5 mm

File Name = SriLankaB_03.tif





100 nm



Mag = 30.00 K X

EHT = 5.00 kV

Signal A = SE2 Date : 19 Feb 2020

WD = 4.5 mm

File Name = SriLankaB_04.tif

