

A new feature of the county record lists is a summary of the past year of recording provided by our Recorder for Hepatics, **Sam Bosanquet**, and our Recorder for Mosses, **Tom Blockeel**. In each case the full lists are presented after each report in the normal way. The Editor hopes members will enjoy reading the new reports and find them a valuable and interesting addition to the lists.

The hepatic year – 2010

The 137 vouchers received for new and updated vice-county records in 2010 was a significant reduction from the remarkable 213 in 2009, but was still more than 70% up on the 78 checked in 2008 (see table below).

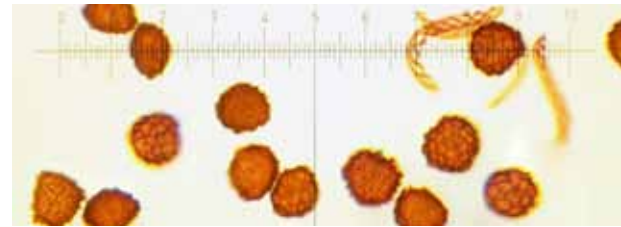
There was good, solid work throughout much of England in 2010, albeit without any outstanding new discoveries. Sharon Pilkington and Andrew Branson were responsible for seven new species and one updated record in the south-western counties from Devon to Dorset, among which were *Anthoceros agrestis* and *Blasia pusilla* growing together at one site, and some extremely tiny scraps of *Leiocolea badensis* from another. Des Callaghan's *Harpanthus scutatus* in South Somerset was an excellent south-west English record as well. Richard Lansdown discovered *Porella obtusata* in East Gloucestershire, many miles from known extant sites, and along with

Des and Sharon collected *Riccia cavernosa* from West Gloucestershire. *R. cavernosa* was also added to the East Norfolk list, thanks to a dry summer (there, if not in the west), and *Fossombronia foveolata* was seen there for the first time since 1936. A recording visit to Warwickshire filled in some big gaps for the *Atlas* and updated three pre-1960 records, whilst the tale in neighbouring Shropshire was one of new *Nardia compressa* and updated *Tritomaria exsectiformis*. The Spring Meeting in Nottinghamshire was better for new mosses than new liverworts and produced just eight hepatic vouchers from three counties, of which *Cephaloziella divaricata* and *Microlejeunea ulicina* in Nottinghamshire and *Cololejeunea minutissima* in Leicestershire were the most noteworthy. Local recorders in Leicestershire also contributed new *Metzgeria consanguinea* and updated *Scapania nemorea*. A profitable visit to Cheshire by Tom Blockeel

revealed new *Scapania gracilis* and *Kurzia trichoclados*, as well as the first *S. umbrosa* since before 1932. Tom also made the first modern record of *Ricciocarpos natans* for mid-west Yorkshire and found



◁ *Fossombronia foveolata*, Buxton Heath, and its spores. Colin Dexter



the first Westmorland colony of *Herbertus stramineus*.

The number of new county records from Wales continued to fall as the low-hanging fruits have almost all been plucked. The two most remarkable records were *Aphanolejeunea microscopica* in Glamorgan, 40 km south of its previous southernmost British record, and *Gymnomitrium crenulatum* in Carmarthenshire, a long-awaited first record of the genus for this relatively thoroughly explored county. Carmarthenshire also had its first record of *Fossombronia foveolata*, and the dry early summer also led to Mark Lawley's discovery of this species on a reservoir margin in Radnorshire. Before too long, recorders will need to target north Wales (or send in their North Wales records) to avoid a bracketing session of monumental proportions.

Probably the most notable record made in Britain during the year was *Scapania*

▷ *Riccia cavernosa*, west Gloucestershire. Des Callaghan



paludicola found new to Scotland by David Long, Gordon Rothero and David Bell. This was a reassuringly characterful specimen complete with gemmae, and unquestionably this hard-to-pin-down plant. Almost as exciting was Scotland's second population of *Pallavicinia lyellii*, in Wigtownshire. Liz Kungu and David Chamberlain continued with their wide-ranging *Atlas* recording and made plenty of new county records in the process, both in the south-west and in the north-east where Liz co-ordinated the first week of the Summer Meeting. Among the liverwort highlights of the Tomnavoulin week were *Cladopodiella francisci* and *Solenostoma confertissimum*, as well as a couple of new counties each for *S. hyalinum* and *S. paroicum*. The second week, in Dingwall, produced three sites for *Moerckia hibernica*, all of them rather mundane and base-poor, with *Sphagnum* as an associate, as well as *Microlejeunea ulicina* and *Trichocolea tomentella* near the north-east edge of their ranges. Liz Kungu's 2004 specimen of

	New records		Updated records		Deletions	
	2009	2010	2009	2010	2009	2010
England	39	41	14	12	1	–
Wales	9	6	1	1	–	–
Scotland	50	39	11	9	–	–
Ireland	57	26	31	3	–	–
Channel Islands	1	–	–	–	–	–
Total	156	112	57	25	1	0

Plagiochila heterophylla from West Perthshire also came from remarkably far east. Gordon Rothero collected a voucher for the last of Ben Averis' new *Acrobolbus wilsonii* sites, in West Ross, and also found *Bazzania pearsonii* new to Jura and *Anastrophyllum hellerianum* in East Sutherland. David Long discovered a remarkable new colony of *Acrobolbus* in exposed, bryophyte-rich turf on St Kilda.

A long weekend by two bryologists in Co. Kilkenny produced 16 new county liverworts and one updated record, illustrating the possibilities there still are for making bryological discoveries in Ireland. *Cephaloziella turneri* was the only Irish rarity among the 17 vouchers, and its presence on the only short stretch of estuary in the county suggests that *C. turneri* may be widely overlooked elsewhere on the south coast of Ireland: the only other recent records come from West Cork, Co. Wicklow and West Donegal. Fionnuala O'Neill's *Prilidium ciliare* from Co. Cavan is one of remarkably few Irish records, and Chris Forster Brown sent an updated record for *Douinia ovata* from Co. Down. The remainder of the Irish vouchers came from Co. Wicklow, Co. Dublin and Co. Louth, thanks to the Dublin Bryophyte Group coordinated by Jo Denyer. Melinda Lyons' *Odontoschisma denudatum* and *Kurzia trichoclados*, and the *Plagiochila spinulosa* found during Gordon Rothero's visit were the most interesting additions to the liverwort flora of these eastern counties.

Thallose liverworts accounted for 40% of specimens, despite holding fewer than 25% of genera: 9 *Marchantia* and 14 *Conocephalum* suggest that many bryologists prefer our larger liverworts over their small, leafy cousins. There were only 6 specimens of *Scapania* and just 2 *Cephalozia*, continuing trends from 2009, but *Jungermannia s.l.* fared rather better, with 7 specimens of *Solenostoma* and 2 of *Jungermannia*.

Three liverworts have been showing clear range increases in recent years (Bates & Preston, 2011) and two continued this trend in 2010. *Lophocolea semiteres* was the fourth commonest species submitted after the large thallose species in *Conocephalum* and *Marchantia*. The five new counties were Middlesex, Warwickshire, Shropshire, Nottinghamshire and Berwickshire, filling in gaps rather than representing any great leaps: large gaps in its distribution remain in south-west England (except for Cornwall), Kent and Sussex, most of Wales, Northumbria, the northern half of Scotland, and Ireland away from Co. Down. *Cololejeunea minutissima* continues to spread north-eastwards into South Somerset, East Gloucestershire, Leicestershire and North Lancashire, but *Colura calyptrifolia* seems to have hit a bit of a wall on its eastward spread, with the only new records coming from Co. Kilkenny and Wigtownshire. *Metzgeria consanguinea* – an almost constant associate of *Colura* – may also be spreading north-eastwards and was recorded new to four English vice-counties as well as Co. Kilkenny, although confusion with *M. violacea* might have masked its presence in the past.

Specimens came from 57 of the 153 British and Irish vice-counties (37%), with a reasonable geographical spread. The most productive counties were: H11 Co. Kilkenny (17 records); 94 Banffshire (11); 56 Nottinghamshire (7); 74 Wigtownshire (6); H20 Co. Wicklow (5); 106 East Ross (5); 38 Warwickshire (5); 55 Leicestershire with Rutland (4); and 7 North Wiltshire (4). 49 people contributed to the records either as collectors or referees.

Reference

Bates, J.W. & Preston, C.D. (2011). Can the effects of climate change on British bryophytes be distinguished from those resulting from other environmental changes? In *Bryophyte Ecology and Climate Change*. Edited by Z. Tuba, N.G. Slack & L.R. Stark. Cambridge: Cambridge University Press.

New records – hepatics

- 1.2. *Anthoceros agrestis*. **8:** By top lily pond, Six Wells Bottom, Stourhead, ST768345, 2010, A Branson; **57:** stubble field, Sutton Scarsdale, SK44716832, 2010, JH Egan, RF Holmes & H Lake.
- 2.1. *Phaeoceros laevis*. **75:** shaded earth bank in wood, 40 m alt., Cassillis Estate, Dalrymple Wood, south of River Doon, NS33861272, 2010, DF Chamberlain & EM Kungu.
- 2.1. *Blasia pusilla*. **8:** By top lily pond, Six Wells Bottom, Stourhead, ST768345, 2010, A Branson.
- 5.1.a. *Marchantia polymorpha* subsp. *polymorpha*. **7:** on vertical brickwork of old but functioning canal lock, Kennet and Avon Canal, Caen Hill Locks, Devizes, ST985614, 2010, S Pilkington; **18:** abundant with *Pellia neesiana* and sedges, 90 m alt., Epping Forest, Hill Wood Bog west, TQ40629755, 2010, KJ Adams; **56:** sandstone wall, Gamston Parish Church, SK708760, 2010, CR Stevenson, CD Preston & NJ Law.
- 5.1.b. *Marchantia polymorpha* subsp. *ruderalis*. **7:** disturbed heathy ground with abundant *Funaria hygrometrica*, Spye Park, ST95926735, 2010, A Branson; **38:** in abundance on block-paved pavement, White Hart Lane, Ufton, SP37906216, 2010, NJ Law; **56:** side of gravelly track, 15 m alt., The Moorings, East Bridgford, SK687435, 2010, TL Blockeel 39/010; **74:** disturbed ground near glass houses, 50 m alt., Logan Botanic Garden, NX095426, 2010, DF Chamberlain; **91:** damp gravel path beside footbridge, 70 m alt., The Burn, north of Edzell, NO59767156, 2010, DG Long, NG Hodgetts & D Bell 40358; **H20:** earth bank by car park, Tinahely Railway, T042721, 2010, SDS Bosanquet.
- 5.1.c. *Marchantia polymorpha* subsp. *montivagans*. **94:** upland stream valley, Conglass Water, Badnafrave & Blairnamarrow, NJ2115, 2010, SDS Bosanquet, RV Lansdown & O Moore.
- 7.1. *Reboulia hemisphaerica*. **75:** base of south-facing volcanic crags, 120 m alt., Knockdolian

Hill, below Duniewick Fort, NX116851, 2010, GP Rothero & EM Kungu.

- 9.1. *Conocephalum conicum*. **28:** damp ground on floor of floodplain woodland, Hilborough Wood on banks of Wissey, TF83490103, 2010, CR Stevenson; **56:** 35 m alt., Clumber Lake, Clumber Park, SK622739, 2010, NG Hodgetts; **66:** Ragpath Wood, NZ197416, 2010, A Mclay; **94:** soil by river, Dullan Water, Dufftown, NJ322382, 2010, M Lawley; **95:** dense mass on bank of River Lossie, Cooper Park, Elgin, NJ21916347, 2010, CD Preston, SDS Bosanquet & RJ Fisk; **106:** on boulder on stream bank, 115 m alt., Big Burn, west of Fyrish, north of Evanton, NH61026882, 2010, DG Long, MO Hill & A Horwath 39412; **H20:** river bank, 130 m alt., River Slaney, south of Stratford, S885929, 2010, SDS Bosanquet.
- 9.2. *Conocephalum salebrosum*. **62:** in moist recess in stream gully, 190 m alt., Havern Beck, Saltergate, SE847946, 2010, TL Blockeel 39/432; **74:** cliffs by the sea, 5 m alt., Coast west of Galdenoch Castle, NW961623, 2010, DF Chamberlain & EM Kungu; **95:** soil bank by river, 55 m alt., River Spey, Bridge of Sourden, NJ29075085, 2010, D Bell, SDS Bosanquet & RV Lansdown; **104:** shaded rock face in ravine, 80 m alt., Achnacloich, Gillean Burn, NG602077, 2009, 2010, NG Hodgetts 7625, det. DG Long; **105:** on wet, calcareous rocks by waterfall in burn, 210 m alt., Allt a' Ghiubhais, north boundary of Rassal SSSI, NG88234544, 2010, GP Rothero 2010193; **106:** on damp shady soil by stream, 115 m alt., Big Burn, west of Fyrish, north of Evanton, NH61026882, 2010, DG Long, MO Hill & A Horwath 39410; **H21:** boulder on edge of wooded stream, 70 m alt., Druid's Glen, Carrickmines, O242231, 2010, JL Denyer JLD-B-10-70, conf. ME Newton.
- 10.1. *Riccia cavernosa*. **27:** Damp mud of dried pond, 25 m alt., Top Common, Beeston Regis, TG165428, 2010, F Farrow, conf. M Ghullam; **34:** abundant young thalli in depression by fence in enclosure, 0 m alt., WWT Slimbridge, SO719047, 2010, DA Callaghan, S Pilkington, P Hanson & RV Lansdown; **79:** dominant sheets on exposed

- mud of west end of loch, 275 m alt., Ale Moor Loch north of point of entry of the Ale Water, NT387146, 2010, RWM Corner, det. DG Long.
- 10.9. *Riccia glauca*. 38:** game cover alongside brook, Monwooe Lea Farm, Over Whitacre, SP2722 9141, 2010, NJ Law, conf. TL Blockeel; **70:** in stubble field, 190 m alt., Little Blencow, north-east of Greystoke, NY459338, 2010, TL Blockeel 39/406; **74:** arable stubble field, 18 m alt., West Myroch, Garden Field, NX112416, 2010, EM Kungu & V Heppell.
- 10.10. *Riccia subbifurca*. 45:** thin soil over lime-stone, Bosherton Lake east side, SR977957, 2005, SDS Bosanquet.
- 11.1. *Ricciolepis natans*. 64:** among iris on bed of dried out pond, 5 m alt., Bishop Wood, near Selby, SE55203267, 2010, TL Blockeel 39/400.
- 14.2. *Pellia neesiana*. 16:** swampy seepage line at head of valley bog, Keston Bog, TQ418644, 2010, FJ Rumsey; **28:** boggy streamside, Stanford Training Area, Sturston Nursery, TL886954, 2010, AL Bull, det. CR Stevenson; **H11:** wet ground under *Salix*, Bishops Mountain east, S612249, 2010, SDS Bosanquet & CD Preston.
- 16.1. *Fossombronia foveolata*. 27:** bare peat on track, 30 m alt., Buxton Heath, Hevingham CP, TG17372156, 2010, M Ghullam; **43:** shallow soil in crevice of boulder on reservoir margin, Penygarreg Reservoir, near Rhyader, SN897684, 2010, M Lawley; **44:** abundant on reservoir margin, 305 m alt., Usk Reservoir west, SN80922771, 2010, SDS Bosanquet.
- 16.4. *Fossombronia pusilla*. 91:** grassy slope beside house, 70 m alt., The Burn, north of Edzell, NO59767161, 2010, DG Long 40356, NG Hodgetts & D Bell.
- 16.8. *Fossombronia incurva*. 53:** sandy soil near edge of gravel pits, 15 m alt., Whisby Nature Park, SK922668, 2010, M Ghullam.
- 17.1. *Moerckia hibernica*. 106:** in flush amongst *Sphagnum* and *Scapania* on steep, north-facing rocky hillside, 595 m alt., Allt Coire Lochain, below Glas Leathaid Beag, Ben Wyvis, NH48397110, 2010, DG Long 39439.
- 18.1. *Pallavicinia lyellii*. 74:** at base of *Molinia* tussocks in gentle south-east-facing slope above mire, 70 m alt., Galdenoch Moor, just east of lochan, NW97006218, 2010, GP Rothero 2010518, EM Kungu & DF Chamberlain.
- 20.2. *Metzgeria consanguinea*. 55:** horizontal elder branch in light woodland, Bunkers Hill Wood, SP68U, 2010, D Ingram; **55:** on branch, Dimminsdale, SK375218, 2010, U Hamzaoui, det. I Pedley; **61:** Willow bole in woodland by dried-up pond, Kilnwick Percy, Pockington, SE822499, 2010, C Wall; **68:** on trees in wooded gorge, 90 m alt., Routinn Lynn, NT983367, 2010, J O'Reilly & C O'Reilly; **79:** on sallow in wet woodland by lochan, 250 m alt., Lochan west of Howleuchshiel by Robertson, NT418142, 2010, GP Rothero 2010280, DG Long & D Bell; **H11:** spruce trunks, 185 m alt., Cloghscregg, S632444, 2010, SDS Bosanquet & CD Preston.
- 22.2. *Riccardia chamedryfolia*. H31:** on edge of base-rich flush, Carlingford Mountain south-west, J13241368, 2010, SDS Bosanquet, JL Denyer *et al.*
- 22.4. *Riccardia palmata*. 4:** among *Nowellia* on decaying log in humid ravine woodland, Six Acre Wood, Lee Abbey Estate, Lynton, SS695489, 2010, S Pilkington; **24:** well rotted, partially collapsed log, 175 m alt., Happy Valley, Great Kimble, SP83220575, 2010, JA Wright; **74:** on cut log in scrub woodland, 90 m alt., woodland north-east of public road by Lochnaw, NW996633, 2010, GP Rothero 2010513, EM Kungu & DF Chamberlain.
- 22.5. *Riccardia latifrons*. 94:** on *Sphagnum* on boulder in mire, 330 m alt., Glack of Breagach, Glen Rinnes, NJ253319, 2010, EM Kungu, RJ Fisk & CD Preston.
- 23.4. *Porella obtusata*. 33:** large stands on the north-facing side of an old stone wall, 250 m alt., Hornsleasow Farm, SP113328, 2010, RV Lansdown.
- 23.5. *Porella pinnata*. 47:** silty tree bases/submerged rocks in several locations, River Dyfi, SN724994, 2010, C Forster Brown.
- 24.1. *Radula complanata*. 38:** on Hawthorn, Ufton Fields nature reserve, SP3861, 2010, MO Hill; **56:** bough of young oak in damp hollow in mixed woodland, 40 m alt., Clumber Park, SK62117361, 2010, NG Hodgetts.
- 26.1. *Jubula hutchinsiae*. H11:** rock in front of low waterfall in wooded valley, Kilmaganny, S44813380, 2010, SDS Bosanquet & CD Preston.
- 27.1. *Aphanolejeunea microscopica*. 41:** 30+ patches on *Quercus* trunk in spray zone of waterfall, 100 m alt., Sgwd Gwladus, above viewpoint, SN896092, 2010, SDS Bosanquet & GS Motley.
- 28.3. *Cololejeunea minutissima*. 5:** young *Acer* trunk, Hamdon Hill Country Park, Stoke sub Hamdon, ST484159, 2010, A Branson; **33:** ash trunk, Nutterswood, Cleeve Common, SO982253, 2010, RV Lansdown & E Phillips; **55:** trunk of hawthorn at roadside, Belvoir, SK815329, 2010, RJ Fisk; **60:** sycamore at edge of woodland, 50 m alt., Hodder Valley, south of Higher Hodder Bridge, SD698403, 2010, TL Blockeel.
- 29.1. *Colura calyptrifolia*. 74:** on sallow in scrubby woodland, 90 m alt., woodland north-east of public road by Lochnaw, NW996633, 2010, GP Rothero 2010514, EM Kungu & DF Chamberlain; **H11:** *Sorbus aucuparia* in pine/spruce plantation, 185 m alt., Cloghscregg, S632444, 2010, SDS Bosanquet & CD Preston.
- 32.1. *Lejeunea cavifolia*. H11:** rock above stream, Kilmaganny, S448339, 2010, SDS Bosanquet & CD Preston.
- 32.2. *Lejeunea lamacerina*. 107:** on rock in stream, 32 m alt., Spinningdale Burn, under Migdale Rock, Spinningdale, NH657905, 2010, A Horwath.
- 34.1. *Microlejeunea ulicina*. 56:** young oak trunk in small swampy secondary woodland, 20 m alt., Easton, west of, SK704777, 2010, NG Hodgetts; **96:** on a tree bole, 50 m alt., Kinlea Wood, near Bunchrew, NH616452, 2010, M Ghullam & RJ Fisk.
- 35.1. *Ptilidium ciliare*. H30:** grassland, H11062526, 2009, F O'Neill 1009/03.
- 37.1. *Trichocolea tomentella*. 107:** in damp hollow at base of *Alnus*, 30 m alt., Spinningdale Burn north-west of Spinningdale, NH65929065, 2010, DG Long 39473.
- 39.1. *Herbertus stramineus*. 69:** in turf on rock ledge, 600 m alt., Ruthwaite Cove, below Dollywaggon Pike, NY3513, 2010, TL Blockeel 39/411.
- 40.3. *Bazzania pearsonii*. 102:** in bryophyte turf under heather in scree, 430 m alt., north-east slope of Corra Bheinn, Jura, NR52957565, 2010, GP Rothero 201076.
- 41.2. *Kurzia sylvatica*. 94:** *Sphagnum* bog, Ailnack Gorge, above, NJ1414, 2010, DF Chamberlain; **H11:** vertical river bank upstream of waterfall, Poulansay Waterfall, S547237, 2010, SDS Bosanquet & CD Preston.
- 41.3. *Kurzia trichoclados*. 58:** in deep hole among Millstone Grit rocks, 420 m alt., Laddow Rocks, Crowden Great Brook, SE05830109, 2010, TL Blockeel 39/374; **H11:** peat on moor adjacent to conifer plantation, 240 m alt., Brownstown, north-west of, S461334, 2010, SDS Bosanquet & CD Preston; **H21:** dry ditch, 490 m alt., Cruagh Mountain, O13672204, 2010, M Lyons.
- 42.1. *Lepidozia reptans*. H11:** peaty woodland bank, 175 m alt., Cloghscregg, S632445, 2010, SDS Bosanquet & CD Preston.
- 44.4. *Lophocolea semiteres*. 21:** base of old birch trees with *L. heterophylla*, 150 m alt., Hampstead Heath, West Heath & Sandy Heath, TQ261897, 2009, JG Duckett; **38:** colliery spoil, 80 m alt., Pooley Country Park, SK25530378, 2010, TL Blockeel 39/442; **40:** on soil in disused sand pit, Dallicot, near Claverley, SO777949, 2010, M Lawley; **56:** sandy footpath, Daneshill Lakes NR, north-west of Retford, SK6687, 2010, C Wall 44-4; **81:** on remains of rotten log, 254 m alt., Craigs Plantation, Spottiswoode, NT60094991, 2010, DG Long 40344.
- 48.4. *Plagiochila britannica*. 70:** CG7 dry calcareous grassland on mine spoil heap, 285 m alt., Bishop Hill, NY61285848, 2010, J O'Reilly.
- 48.6. *Plagiochila heterophylla*. 87:** on boulder just above path into wood, 55 m alt., Oak woods north of Glen Falloch, NN32402025, 2004, EM Kungu.
- 48.7. *Plagiochila spinulosa*. H20:** oak by lough edge, 150 m alt., east of Upper Lough, Glenda-

- lough, T107961, 2010, GP Rothero & JL Denyer.
- 48.8. *Plagiochila bifaria*. 42:** one patch on base of *Fraxinus* by Afon Nedd, 180 m alt., Pont Melinfach, SN908106, 2010, SDS Bosanquet & GS Motley.
- 52.4.a. *Cephalozia macrostachya* var. *macrostachya*. 96:** creeping through *Sphagnum* in small wet bog at forest margin, 390 m alt., Abernethy Forest, lochan at Ryunie, NJ005128, 2010, NG Hodgetts 7823; **106:** liverwort crust on peat of decaying bog, 20 m alt., near Loch Eye, NH8280, 2010, MO Hill.
- 53.2. *Cladopodiella francisci*. 94:** clay lip where sheep track crosses into peat cutting, 280 m alt., Easter Corrie, Tomnavoulin, NJ203259, 2010, SDS Bosanquet.
- 56.2. *Odontoschisma denudatum*. 94:** abundant on small peaty patches in bog, 325 m alt., Glack of Breagach, Glen Rinnes, NJ2531, 2010, CD Preston, RJ Fisk & EM Kungu; **H20:** peat face, 550 m alt., Military Road, Glendoo Mountain, O14022010, 2010, M Lyons.
- 58.6. *Cephaloziella divaricata*. 56:** wall top with *Ceratodon purpureus*, 50 m alt., Halam Church, SK678543, 2010, NG Hodgetts, JJ Graham & EM Kungu; **H11:** poached shale soil, Spa Hill, S344676, 2010, SDS Bosanquet & CD Preston; **H31:** occasional on gabbro boulders, Carlingford Mountain south-west, J13141389, 2010, SDS Bosanquet, JL Denyer *et al.*
- 58.11. *Cephaloziella turneri*. H11:** earth banks above estuary and by track to quay, 5 m alt., The Pink Point, S68472308, 2010, SDS Bosanquet & CD Preston.
- 60.5. *Barbilophozia attenuata*. H11:** shaded acidic rock face among conifers, 175 m alt., Cloghscregg, S632445, 2010, SDS Bosanquet & CD Preston; **H20:** rotting wood by river, 350 m alt., River Liffey (upper), Wicklow Mountains National Park, O107127, 2010, GP Rothero & JL Denyer.
- 64.2. *Anastrophyllum hellerianum*. 107:** on log in woodland, 45 m alt., woodland above shore of Loch Migdale, NH650906, 2010, GP Rothero 2010108.
- 65.1. *Tritomaria exsectiformis*. 40:** shaded retaining stone wall, Catherton Common, SO640782, 2010, M Lawley; **94:** on a decayed bole, Glen Fiddich, NJ329352, 2010, M Lawley.
- 66.2. *Lophozia ventricosa*. H11:** rock adjacent to conifers, 240 m alt., Brownstown, north-west of, S461334, 2010, SDS Bosanquet & CD Preston.
- 66.5. *Lophozia sudetica*. 67:** Carter Fell, NT60Y, 2010, J O'Reilly.
- 66.6. *Lophozia excisa*. H31:** with *Archidium* in disused quarry, Windy Gap, J13061366, 2010, SDS Bosanquet, JL Denyer *et al.*
- 68.1. *Douinia ovata*. H38:** block scree, Slieve Donnard, north side, J362287, 2008, C Forster Brown.
- 69.10. *Scapania umbrosa*. 58:** on shaded Millstone Grit rocks, 310 m alt., Black Tor, Crowden Great Brook, SE064001, 2010, TL Blockeel 39/376.
- 69.11. *Scapania nemorea*. 55:** on rock face in ravine, Grace Dieu Wood, SK432177, 2010, SF Woodward SFW66672.
- 69.14. *Scapania paludicola*. 79:** amongst *Sphagnum* beside shallow pool in valley mire, 260 m alt., Ale Water below Piper's Knowe east of Alemoor Reservoir, NT41241557, 2010, DG Long 40347, GP Rothero & D Bell. New for Scotland.
- 69.20. *Scapania aspera*. H11:** limestone outcrop in open woodland, 180 m alt., Tubbrid valley, S353618, 2010, SDS Bosanquet & CD Preston.
- 69.21. *Scapania gracilis*. 58:** sparsely on shaded Millstone Grit rocks, 310 m alt., Black Tor, Crowden Great Brook, SE064001, 2010, TL Blockeel 39/377; **H11:** steep bank in woodland, 175 m alt., Cloghscregg, S632445, 2010, SDS Bosanquet & CD Preston.
- 71.1. *Acrobolbus wilsonii*. 105:** in bryophyte turf on rock on south-west side of wooded burn, 145 m alt., Allt a' Ghiubhais, north boundary of Rassal SAC, NG87964563, 2010, GP Rothero 2010520, site found by ABG Averis; **110:** in turf amongst *Hymenophyllum wilsonii* & *Scapania gracilis* on grassy rocky ridge top, 267 m alt., Claigeann Mor, Mullach Bi ridge, St Kilda, NF08729901, 2010, DG Long 39345.
- 74.2. *Calypogeia muelleriana*. 7:** peaty bases of old, degenerate *Carex paniculata* tussocks in flush, Spye Park, ST95836733, 2010, S Pilkington.
- 74.3. *Calypogeia azurea*. 94:** a few shoots through *Sphagnum*, 590 m alt., Corryhabbie Hill, north side, NJ27722939, 2010, O Moore.
- 75.3. *Leiocolea bantriensis*. 86:** shaded basalt rock face, 300 m alt., Spout of Ballochleam, near Gargunnock, NS652899, 2010, DF Chamberlain & EM Kungu.
- 75.7. *Leiocolea badensis*. 7:** floor of disused chalk quarry, Morgan's Hill SSSI, SU032674, 2010, S Pilkington.
- 75.8. *Leiocolea turbinata*. 38:** quarry, Newbold Quarry LNR, SP4976, 2010, NJ Law, conf. TL Blockeel.
- 78.1. *Jungermannia atrovirens*. H11:** forestry track surfaced with limestone, 175 m alt., Cloghscregg, S632445, 2010, SDS Bosanquet & CD Preston.
- 78.2. *Jungermannia pumila*. 86:** large boulder in stream, Kilsyth, Garrell Burn, NS719785, 2010, DF Chamberlain.
- 79.1. *Nardia compressa*. 40:** on rock in a rivulet, Perkins Beach, Stiperstones, SO367996, 2010, M Lawley.
- 79.2. *Nardia scalaris*. H11:** damp clay on bank on north side of conifer plantation, Bishops Mountain, S606245, 2010, SDS Bosanquet & CD Preston.
- 80.1. *Solenostoma sphaerocarpum*. 105:** moist rock ledges by river in shaded ravine, 40 m alt., Furnace Falls, Letterewe, NG960707, 2010, O Moore.
- 80.2. *Solenostoma confertissimum*. 94:** clay bank in gorge, Ailnack Gorge, NJ141144, 2010, SDS Bosanquet.
- 80.3. *Solenostoma gracillimum*. H11:** bank in conifer plantation, 215 m alt., Brownstown, north-west of, S461336, 2010, SDS Bosanquet & CD Preston.
- 80.5. *Solenostoma hyalinum*. 94:** wet rock by waterfall, 300 m alt., Wester Aultbeg, Glen Rinnes, NJ268336, 2010, CD Preston, RJ Fisk & EM Kungu; **106:** on boulder in stream, 115 m alt., Big Burn, west of Fyrish, north of Evanton, NH61026882, 2010, Long 39411, MO Hill & A Horwath.
- 80.6. *Solenostoma paroicum*. 92:** boulder by stream, Coinlach Burn, Bridgefoot, NJ398033, 2010, M Lawley; **94:** on stone on side of small valley, several metres above water level, 275 m alt., Craigy Stripe, Glen Fiddich south of Dufftown, NJ337355, 2010, CD Preston, M Lawley & D Bell.
- 82.2. *Harpanthus scutatus*. 5:** side of sandstone rock in oak woodland, Ashway Hat Wood (Barle Valley SSSI), SS86303180, 2010, DA Callaghan.
- 85.4. *Gymnomitrium crenulatum*. 44:** small patches on sloping north face of sandstone boulder, 255 m alt., below Crugiau Ladis, SN72754629, 2010, SDS Bosanquet.
- 86.1.b. *Marsupella emarginata* var. *aquatica*. 110:** wet rock slabs in gully on sea cliffs, 70 m alt., Bagh Hunadudh, Mingulay, NL57008435, 2008, DG Long 37834, GP Rothero & DF Chamberlain.

Contributors/collectors of records 2010

K.J. Adams, A.B.G. Averis, D. Bell, T.L. Blockeel, S.D.S. Bosanquet, A. Branson, A.L. Bull, D.A. Callaghan, D.F. Chamberlain, R.W.M. Corner, J.L. Denyer, J.G. Duckett, J.H. Egan, F. Farrow, R.J. Fisk, C. Forster Brown, M. Ghullam, J.J. Graham, U. Hamzaoui, P. Hanson, V. Heppell, M.O. Hill, N.G. Hodgetts, R.F. Holmes, A. Horwath, D. Ingram, E.M. Kungu, H. Lake, R.V. Lansdown, N.J. Law, M. Lawley, D.G. Long, M. Lyons, A. Mclay, O. Moore, G.S. Motley, M.E. Newton, F. O'Neill, C. O'Reilly, J. O'Reilly, I. Pedley, E. Phillips, C.D. Preston, S. Pilkington, G.P. Rothero, F.J. Rumsey, C.R. Stevenson, C. Wall, S.F. Woodward, J.A. Wright.

Sam Bosanquet

Cnwc y Llwyn, Brechfa, Carmarthen
SA32 7QR
(e s.bosanquet@ccw.gov.uk)